



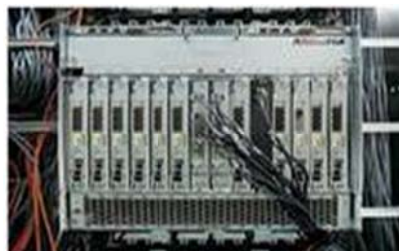
1U Network Security Appliance platform with Intel* Atom* Processors N450, D410, or D510 (“Pineview”)

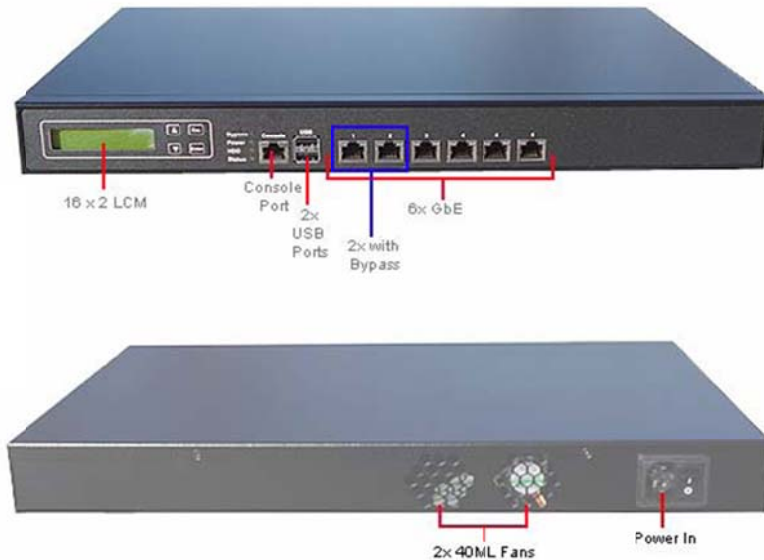
This 1U rack mountable Network Security Appliance platform from NCS Technologies, Inc is specifically designed for network security application deployment with a very short rack-depth (8”) & low power consumption for network closets and small businesses, and forward-facing interfaces. Options exist for a 10/100 Ethernet switch, and up to one network segment (one pair of interfaces) with LAN Bypass for “inline” applications. Key features include

- Supports Intel Atom low-voltage (“Pineview”) processors: N450, D410, and dual core D510 + Intel 82801HM chipset
- 3 - 6 GbE ports via PCI-E x1 and options for 4 or 8 switch ports, and one network segment (two interfaces) with LAN Bypass for “inline” network applications
- Expansive I/O with USB 2.0; 3.5” SATA HDD bay, CF socket, mini-PCI slot and Console
- Built with Intel Embedded IA components for significant market longevity support
- RoHS compliant



NCS is a leading small business manufacturer of PCs, Laptops, Servers, Appliances (application-specific computing devices) and Storage Solutions specifically targeted at customers in the military, industrial, and Independent Software Vendor (ISV) segments of the market. NCS focuses on manufacturing and integrating solutions using Commercial –Off-The Shelf (COTS) components tailored with certain unique requirements. As your appliance partner, we will build the appliance to your exact specifications, load your software image and perform burn-in and functional testing on each unit. All NCS systems are backed by our top quality support and engineering staff and offer a complete range of technical support, warranty repair, and on-site service options. In short, we excel at and are recognized for our ability to deliver mission specific solutions cost effectively and with quality.





Processor	Intel* Atom* low-voltage (“Pineview”) processors: N450, D410, & dual core D510 with HyperThreading (up to 4 threads)
Chipset	Intel 82801HM Controller
BIOS	AMI* Flash BIOS
Memory	Up to 2GB with one SO-DIMM socket, Un-buffered and Non-ECC DDRII 667MHz memory
Gb Ethernet	One Intel 82574L PCIe Gb Ethernet controllers with RJ45 connectors
LAN Bypass (optional)	Bypass between LAN1 & LAN2
Ethernet Switch (optional)	Four or eight port 10/100 switch with 2 ports bypass
SATA Hard Drive (optional)	One internal 3.5” SATA HDD bay
Compact Flash Socket	One CompactFlash* type II
USB	One internal 5x2 pin header (2 x USB 2.0)
Serial Ports	One RJ45 Console port (COM1)
LCD Module (optional)	One 16x2 LCM with 4 button Key Pad
LED	One Bypass LED (Green) One Power LED (Green) One HDD LED (Yellow) One Status LED (Green/Yellow via programmable GPIO)
Power Supply	60W power supply, AC to DC 12V
Dimensions	432mm (W) x 270mm (D) x 44mm (H); (17”W x 8”D x 1.7”H)
Operating Temperature	+0°C to +40°C Ambient
Non-Operating/ Storage Temperature	-40°C to +70°C
Relative Humidity	Non-operating: 95% at +30°C Non-condensing
Certifications	CE/FCC

NCS Technologies, Inc.

1 (888) RING-NCS <http://www.ncst.com/products>

Actual functionality may be limited to other factor including: type, number and capabilities of optional modules incorporated. NCS may make changes to product specifications at any time and without notice. The information in this document is for informational use only, and is subject to change without notice. NCS Technologies, Inc. assumes no responsibility or liability for any errors or inaccuracies that may appear. All names are provided for informational use only.

*Third party brands & names are the property of their respective owners.