



Z14I Laptop

LARGER DISPLAY. MORE DURABLE. LONGER BATTERY LIFE.

The Z14I fully-rugged laptop is engineered for the extreme conditions faced by military and field service personnel around the globe. The sleek new design of the Z14I is packed with features like a FHD 14-inch DynaVue® 1000 NIT sunlight readable touch panel display, 8th Generation Intel® Core™ processors and 16-hour battery life.

The Z14I allows for multiple configurations and offers robust I/O port options.

- 14.0" FHD DynaVue® SR display with 1000 nits
- 8th Generation Intel® Core™ Processor
- Extreme rugged certified for salt fog & fungus resistance
- Touch screen modes: glove, stylus, finger & water
- Unprecedented I/O port options
- Standard backlit keyboard & multimedia bay options



Z14I Laptop Specifications



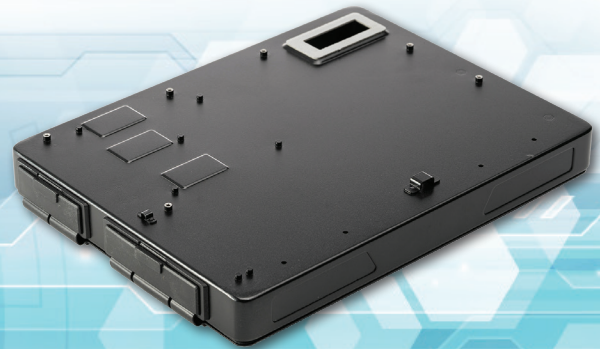
DURABILITY	<ul style="list-style-type: none"> MIL-STD 810G certified (Drop, Shock, Vibration, Rain, Dust, Altitude, Freeze/Thaw, High/Low Temperature, Temperature Shock, Humidity, Explosive Atmosphere, Solar Radiation, Salt Fog, Fungus Resistance) MIL-STD-461G certified (Conduction, Radiation, Conducted Susceptibility, Radiated Susceptibility) ANSI/ISA 12.12.01-2000, Class I, Division 2 6' drop IP 65 certified Aluminum-magnesium alloy chassis Port covers Sunlight readable display
OPERATING SYSTEM	Windows® 10 Pro 64-bit
PROCESSORS	<ul style="list-style-type: none"> Intel® Core™ i7-8650U vPro™ (8th Gen) 1.9GHz processor with Turbo Boost Technology up to 4.2GHz, 8MB cache Intel® Core™ i7-8550U (8th Gen) 1.8GHz processor with Turbo Boost Technology up to 4.0GHz, 8MB cache Intel® Core™ i5-8350U vPro™ (8th Gen) 1.7GHz processor with Turbo Boost Technology up to 3.6GHz, 6MB cache Intel® Core™ i5-8250U (8th Gen) 1.6GHz processor with Turbo Boost Technology up to 3.4GHz, 6MB cache
GRAPHICS	Intel® UHD Graphics 620
MEMORY	2 slots 8GB up to 32GB (2400MHz DDR4)
STORAGE	<ul style="list-style-type: none"> 256GB SSD Optional 1TB HDD Optional 512GB/1TB SSD Optional OPAL 2.0 SSD or FIPS 140-2 Optional 2nd storage (SSD)²
DISPLAY	<ul style="list-style-type: none"> 14.0" FHD 1000 nits DynaVue® sunlight readable display with capacitive multi-touch screen User selectable touch mode for Finger/Water, Glove, or Stylus programmable function
AUDIO	<ul style="list-style-type: none"> Integrated microphone Intel® High Definition Audio Compliant Integrated speaker x 2 Keyboard volume and mute controls
CAMERA	Integrated 2.0 MP web-cam with shutter design
KEYBOARD & INPUT	<ul style="list-style-type: none"> 2 user-definable keys (P1/P2) RF signal slide-switch Standard membrane keyboard with optional LED backlight

COMMUNICATIONS	<ul style="list-style-type: none"> Integrated 10/100/1000 Ethernet Intel® Dual Band Wireless AC 9260 (802.11a/b/g/n/ac) Bluetooth® V5.0 Optional dedicated GPS module (UBLOX-NEO-M8N) Optional 4G LTE multi-carrier mobile broadband Optional RF antenna pass-through for GPS, WWAN, and WLAN
SECURITY	<ul style="list-style-type: none"> Intel® vPro™ Technology (per CPU options) TPM 2.0 NIST BIOS compliant Easy removable SSD Smart card reader
I/O INTERFACES	<ul style="list-style-type: none"> USB 3.1 (type A) x 2 USB 3.1 (type C) x 1 USB 2.0 (type A) x 2 Audio in/out (combo jack) x 1 MicroSD (MicroSDXC) x 1 10/100/1000 Ethernet (RJ-45) x 1 VGA port (D-sub, 15-pin) x 1 HDMI port (type A) x 1 Serial port (RS-232 : D-sub, 9-pin) x 1 (optional to support RS-422/ RS-485)² Docking connector (41-pin Pogo) x 1 SIM card x 1 DC-In jack x 1 PCMCIA x 1 Optional ExpressCard 54 x 1 or Optional 2nd PCMCIA x 1 Optional RF antenna pass-through for GPS, WWAN, and WLAN
MEDIA BAY	<ul style="list-style-type: none"> Optional DVD/RW⁶ Optional 2nd battery⁶ Optional 2nd SSD⁶
POWER	<ul style="list-style-type: none"> AC adapter : 100-240V, 50Hz-60Hz, 90W Optional AC adapter (100-240V, 50Hz-60Hz, 120W), with NVIDIA® VGA Main battery Li-Ion, 10.8V, 4700mAh, 16 hours³ Optional 2nd battery Li-Ion 10.8V, 4700mAh, 9 hours³ Optional bridge battery : 5 minutes swap time⁴
ENVIRONMENT	<ul style="list-style-type: none"> Temperature Operating : -4°F ~140°F Storage : -40°F to 160°F Humidity : 5% ~ 95%
DIMENSION & WEIGHT	<ul style="list-style-type: none"> 14.02 in (L) X 11.02 in (W) x 1.97 in (H) 7.93 lbs
WARRANTY	3-year DURABOOK 3-D Warranty

1. Night vision mode is available only for sunlight readable display
 2. Contact your sales representative for feature availability
 3. Tested using the MobileMark 2014 battery life benchmark. Results may vary under different situations including hardware configuration, software, operating conditions, power management settings and other factors.

4. The system will stay operating (within 300 seconds in standby mode) when user swaps the battery.
 5. Weight varies with options. The dimension with optional discrete VGA is 61mm (H).
 6. Options are user swappable

NCS-PIZ14I-SI082820



- Additional I/O Ports
- RAID configuration using additional SSDs
- Video & Audio PCIe capture card
- Other custom PCIe cards

Z14I Expansion Box

MOBILE. SECURE. PRIVATE SERVER.

The Z14I Expansion Box is one of the most powerful enhancements to the Durabook Z14I rugged laptop, converting it from a traditional rugged laptop to a portable rugged server. The PCIe x 4 and PCIe x 1 slots allow for simple field installs that deliver additional I/O ports, RAID configuration, video & audio PCIe enhancement options and more. The expansion box, adding just 1.98 lbs, creates a secure private network capability for your users in the field while maintaining its MIL-STD 810G and IP65 compliance.

- Convert a Z14I Rugged Laptop into a Z14I Rugged Mobile Server
- Z14I Expansion box provides two compartments with PCIe interface for various solution builds
- Expansion Box can be installed in the field with simple and easy guidelines to become a powerful, secure, mobile server

